

GALLOWS RUN WATERSHED RESTORATION AND PROTECTION PLAN

**Figure 7-1
PROBLEM AREAS**

- LEGEND**
- WATERSHED OUTLINE
 - STREAMS
 - MUNICIPAL BOUNDARIES
 - STATE GAME LANDS
 - TRIBUTARY IDENTIFICATION

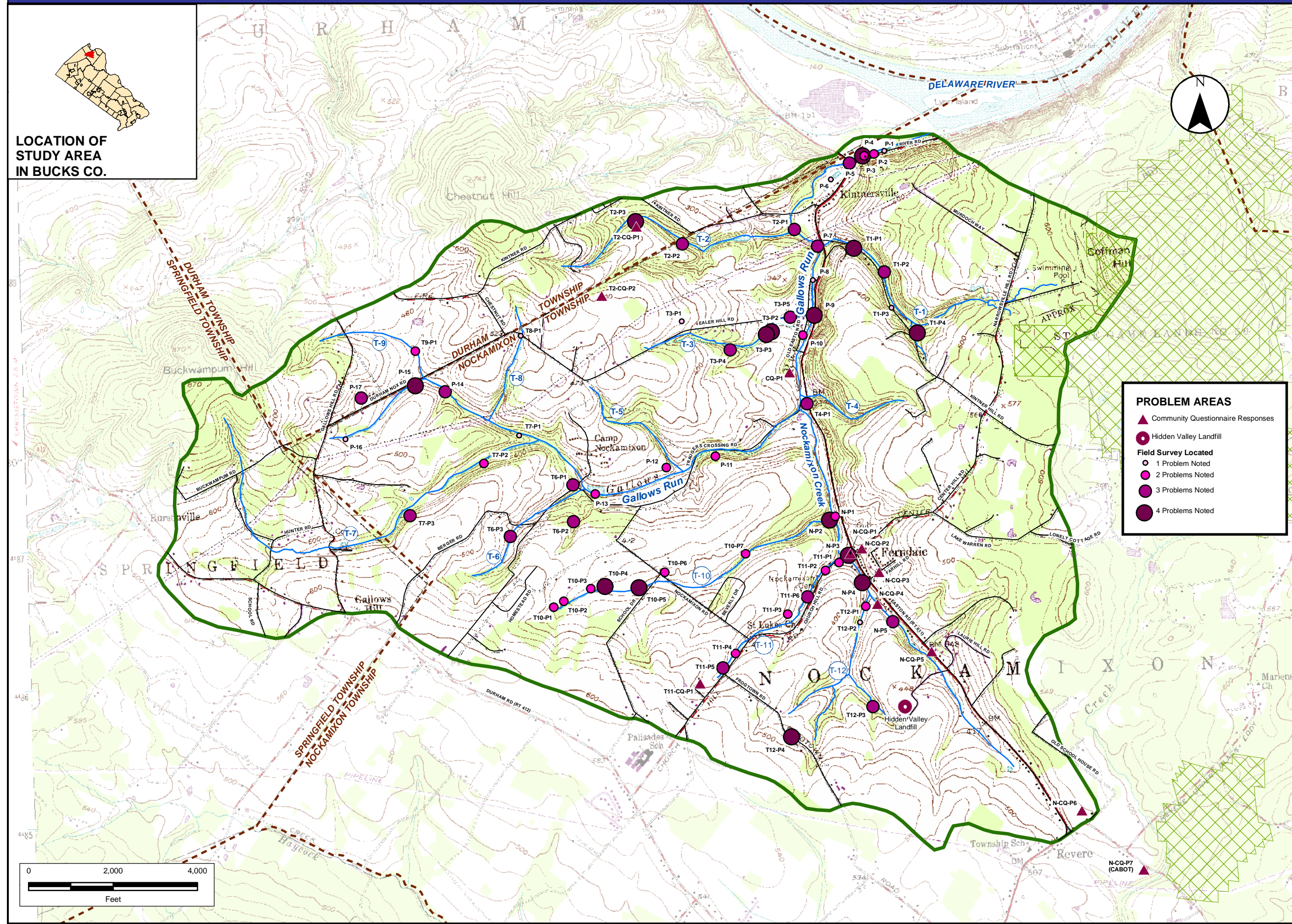
Prepared For:
**Gallows Run
Watershed
Association**

NOTES:
Portions of this map were generated from the existing data sources as listed below. These existing data were utilized for base mapping purposes and are shown for spatial reference only.

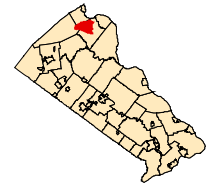
Data Sources:
Watershed Boundary - PADEP, Modified by Borton-Lawson
Community Questionnaire Identified Problems - Data provided by watershed survey respondents
Field Survey Located Problems - Locations identified in the field by Forbes Environmental and watershed association volunteers
Topographic Map - USGS Riegelsville PA Quad
State Gamelands - PADEP (Note PADEP State Gameland GIS-generated boundaries do not line up with boundaries as shown on USGS topographic map)



PREPARED BY: WSB CHECKED BY:
DATE: 7/15/2005 PROJECT NO.: 2004-1571-00



LOCATION OF STUDY AREA IN BUCKS CO.



FILE: \\WBData\Projects\2004\1571\00\DATA\GIS\ArcMap\watershed_gallows-draft.mxd