

**GALLOWES RUN WATERSHED RESTORATION AND PROTECTION PLAN**

**FIGURE 4-4 PERCENT IMPERVIOUS SURFACES**

**LEGEND**

- WATERSHED OUTLINE
- STREAMS
- PENNSYLVANIA CANAL
- WATER BODIES
- LOCAL ROADS
- STATE ROADS
- MUNICIPAL BOUNDARIES

**PERCENT IMPERVIOUS**

- 1 to 10% (Least Impervious Areas)
- 11 to 49%
- 50 to 74%
- 75 to 89%
- 90 to 100% (Most Impervious Areas)

Prepared For:  
**Gallows Run Watershed Association**

**NOTES:**  
 Portions of this map were generated from the existing data sources as listed below. These existing data were utilized for base mapping purposes and are shown for spatial reference only.

**DATA SOURCES:**  
 Watershed - PADEP, modified by Borton-Lawson  
 Municipal Boundaries - PennDOT  
 Roads - PennDOT (Modified by Borton-Lawson)  
 Streams - PADEP  
 State Gamelands - PADEP  
 Delaware River - USFWS NWI Data  
 Canal - Digitized by Borton-Lawson  
 Topographic Map - USGS Riegelsville PA Quadrangle  
 Percent Impervious Area - Derived from DVRPC Landuse using NRCS Land Cover Classifications

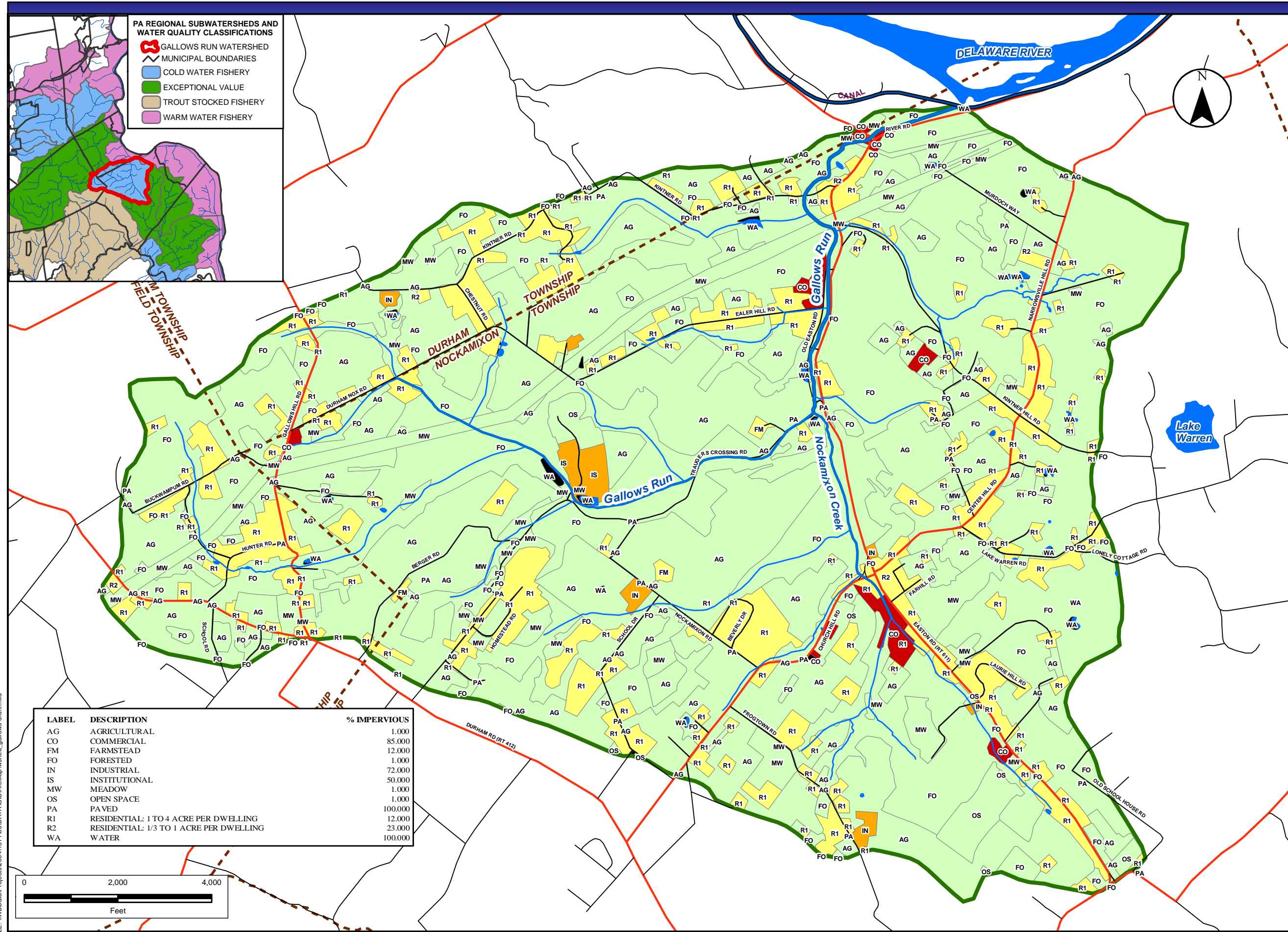
**Forbes Environmental & Land Use Planning**

**Borton Lawson ENGINEERING**  
 6814 Chrisphat Drive, Suite 200 Bath, PA 18014-8503

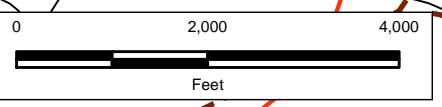
PREPARED BY: WSB      CHECKED BY:  
 DATE: 4/18/2005      PROJECT NO.: 2004-1571-00

**PA REGIONAL SUBWATERSHEDS AND WATER QUALITY CLASSIFICATIONS**

- GALLOWES RUN WATERSHED
- MUNICIPAL BOUNDARIES
- COLD WATER FISHERY
- EXCEPTIONAL VALUE
- TROUT STOCKED FISHERY
- WARM WATER FISHERY



LABEL	DESCRIPTION	% IMPERVIOUS
AG	AGRICULTURAL	1.000
CO	COMMERCIAL	85.000
FM	FARMSTEAD	12.000
FO	FORESTED	1.000
IN	INDUSTRIAL	72.000
IS	INSTITUTIONAL	50.000
MW	MEADOW	1.000
OS	OPEN SPACE	1.000
PA	PAVED	100.000
R1	RESIDENTIAL: 1 TO 4 ACRE PER DWELLING	12.000
R2	RESIDENTIAL: 1/3 TO 1 ACRE PER DWELLING	23.000
WA	WATER	100.000



FILE: \\WBData\Projects\2004\1571\00\DATA\GIS\Map\Map\watershed\_gallows-draft.mxd